

ACA-3 Power Supply

Effective: August 1999

AC Adaptor for 7000 Series Detectors
P/N 70-2000000-306

FENWAL®

70-006

GENERAL

The ACA-3 converts 120VAC, 50/60 Hz input to a 24VDC, 100mA output which supplies power to Fenwal 7000 Series smoke detectors. The detectors must use Fenwal series 70-501000-101 four-wire bases with this adaptor. The ACA-3 is especially useful where detectors are utilized for releasing services without the requirement for supervised master panels. Possible applications include door release, smoke damper control and HVAC control.

ELECTRICAL

The ACA-3 consists of a 120/24 volt step-down Class 2 energy limiting transformer and full wave bridge rectifier. The rectified output may not be used to power devices other than the detector units and remote LED indicators.

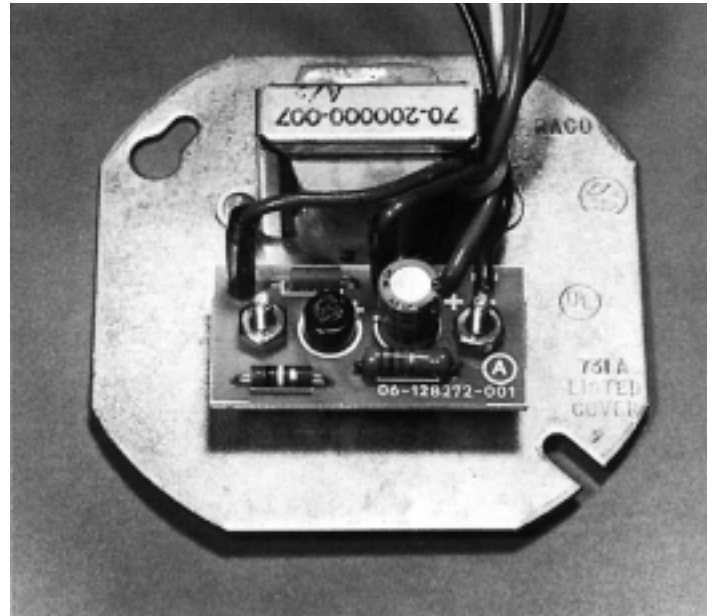
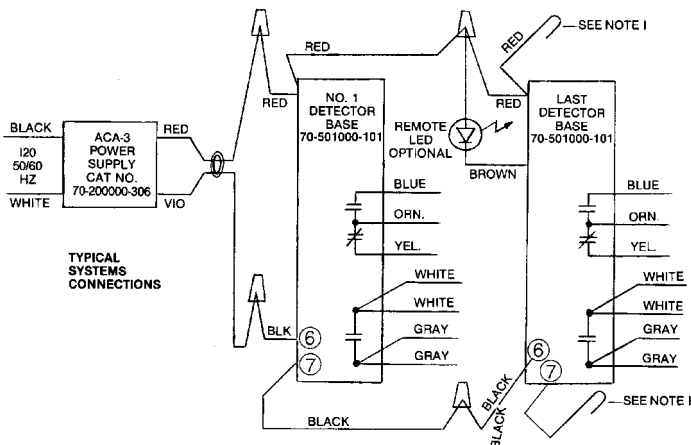
Maximum detector units powered per ACA-3 circuit: 30 up to 100 ohm lead wire resistance

Maximum detector units in simultaneous alarm: 8

Maximum detector units with remote LED units in simultaneous alarm: 4

Reset switch (by others) required to restore detector units to standby condition.

WIRING DIAGRAM



INSTALLATION

The ACA-3 mounts to a standard 4-inch electrical box (by others). The black and white transformer leads are connected to a 120VAC source. The red and violet leads are connected to the 70-501000-101 base, observing polarities. Detector relay terminals may then be connected to other power sources (limited by contact ratings) in order to perform auxiliary functions. See Wiring Diagram.

NOTES:

1. Insulate the end of any unused wire or cut off at the connector in the detector base.
2. Relay contacts shown in normal standby condition.
3. Relay contacts rating 2A at 120 VAC & 28 VDC.
4. Transformer meets standards for safety for specialty transformers – Class 2 energy limiting.

FENWAL®



Protection Systems

This literature is provided for informational purposes only. KIDDE-FENWAL, INC. assumes no responsibility for the product's suitability for a particular application. The product must be properly applied to work correctly. If you need more information on this product, or if you have a particular problem or question, contact LICO GmbH, www.mess-regeltechnik.at Tel +43 1 706 43 000 office@lico.at